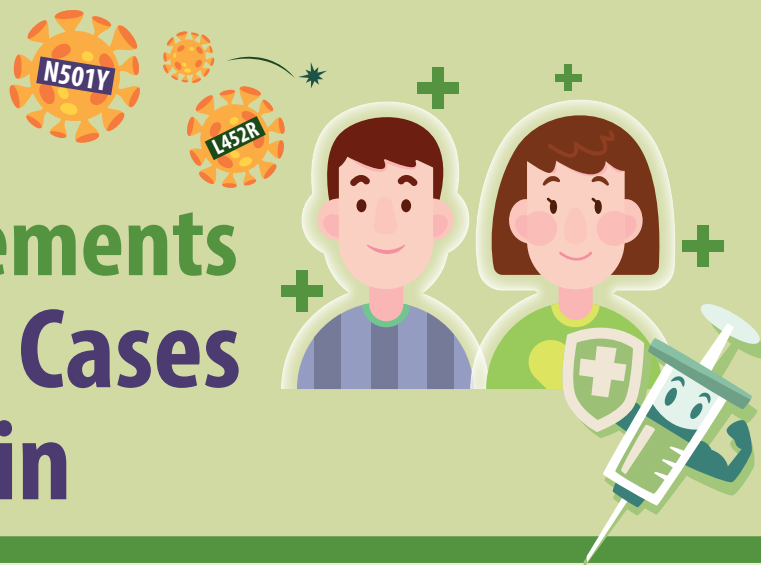




All You Need To Know 

# Quarantine Arrangements of Local COVID-19 Cases with Mutant Strain



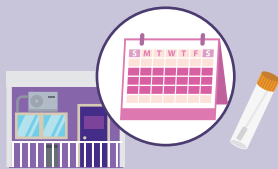
 **N501Y or L452R case** 

**Preliminary positive or confirmation result**

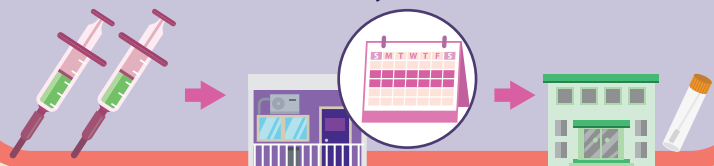
A restriction-testing declaration would be made towards the building

**Household contacts and people living in the same subdivided unit**

Compulsory quarantine in a quarantine centre for 21 days



When all criteria have been satisfied, including completion of a vaccination course, the duration of quarantine can be **shortened to 14 days**, plus 7 days of self monitoring and subject to compulsory testing at a community testing centre on Day 19



**Other residents**

Generally speaking, need not be classified as close contacts and placed under quarantine

**Be required to have more frequent testing**

Subjected to compulsory testing on Days 3, 7, 12 and 19 counting from the day on which the confirmed case left the building



**If further cases are detected in the same building**

All residents of the building would be classified as close contacts



हिन्दी



नेपाली



اردو



ไทย



Bahasa Indonesia



Tagalog



සිංහල භාෂාව



বাংলা ভাষা



Tiếng Việt