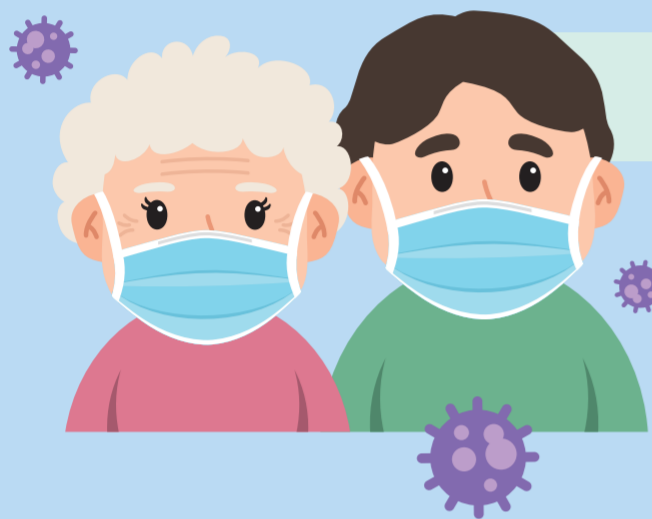




## Latest COVID-19 vaccination arrangement for Sinovac (CoronaVac) vaccine for adult residents of residential care homes

### For those without previous COVID-19 infection

- ✓ The interval between first and second dose of Sinovac is **21** days, and the interval between the second and third doses and the third and fourth doses are both **90** days



### For those who have previous COVID-19 infection

- ✓ **Unvaccinated\*** residents can receive the first dose of Sinovac vaccine **28** days after recovery and the second dose of Sinovac vaccine at least **30** days after the first dose, and the third dose **90** days after the second dose
- ✓ Residents **previously vaccinated with 1 dose\*\*** of Sinovac vaccine can receive another dose of Sinovac vaccine at least **28** days after recovery and receive another dose of vaccine **90** days after the second dose
- ✓ Residents **previously vaccinated with two doses\*\*\*** of Sinovac vaccine can receive one additional dose of vaccine at least **28** days after recovery
- ✓ Residents **previously vaccinated with three or more doses\*\*\*** of COVID-19 vaccine do not need further dose



Visiting health teams will still access those RCHs with infected cases to provide COVID-19 vaccination to non-infected or recovered residents in RCHs.

Immunocompromised residents should follow vaccination regimen for immunocompromised persons

\* Persons infected with the virus less than 14 days after the first dose can receive second dose 28 days after recovery

\*\* Persons infected with the virus less than 14 days after the second dose can receive third dose at least 28 days after recovery

\*\*\* Persons infected with the virus less than 14 days after the third dose can receive fourth dose at least 28 days after recovery